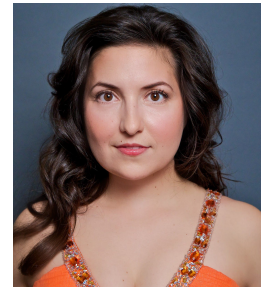


CHELSEA HOLLOW

Coloratura soprano
chelseahollow@gmail.com
Chelseahollow.com
(805) 901-4147
1326 8th Street, Alameda, CA, 94501



OPERA

Marie	<i>La Fille du régiment</i>	West Bay Opera in the Schools	2019
Olympia	<i>Les Contes d'Hoffmann</i>	Pocket Opera	2019
Amy (cover)	<i>Little Women</i>	Island City Opera	2019
Adina	<i>L'elisir d'amore</i>	San Francisco Opera Guild	2018
Stella Kowalski	<i>A Streetcar Named Desire</i>	Escenia Ensemble	2018
Elizabeth Frankenstein	<i>Frankenstein</i>	West Edge Opera	2017
Rozlynn	<i>Remedial Math</i>	Opera Theater Unlimited	2017
Sister	<i>Why I Live at the P.O.</i>	West Edge Opera	2017
Marie	<i>La Fille du régiment</i>	San Francisco Opera Guild	2016
Mina Harker	<i>Despertar al Sueño</i>	West Bay Opera & Escenia Ensemble	2016
Chocholka/Páskova	<i>The Cunning Little Vixen</i>	West Edge Opera	2016
Serpina	<i>La Serva Padrona</i>	San Francisco Opera Guild	2015
Blonde	<i>Die Entführung aus dem Serail</i>	West Bay Opera	2015
Zerbinetta (cover)	<i>Ariadne auf Naxos</i>	Pittsburgh Festival Opera	2014
Amy March	<i>Little Women</i>	San Francisco Conservatory of Music	2014
Dorine	<i>Tartuffe</i>	San Francisco Conservatory of Music	2013
Olympia (cover)	<i>Les Contes d'Hoffmann</i>	West Bay Opera	2012

CONCERT

Soprano Soloist	<i>Carmina Burana</i> (Orff)	Golden Gate Symphony	2019
Soloist	<i>Concerto for Two Orchestras</i> (Gubaidulina)	Berkeley Symphony	2019
Guest Artist	<i>56x54: But Wait! There's More!</i>	The Ensemble for These Times	2019
Concerto Winner	<i>Herzgewächse</i> (Schoenberg)	Blueprint Concert Series	2014
Soloist	<i>Miserere</i> (Allegri)	The Cathedral of Saint Mary	2013
Soloist	<i>To One in Paradise</i> (Boyle)	Hot Air Music Festival	2013

EDUCATION & AWARDS

Finalist	Sausalito Art Song Society	2019
Young Artist	Pittsburgh Festival Opera	2014
MM - Vocal Performance	San Francisco Conservatory of Music	2014
1st Place	SFCM New Music Ensemble Concerto Competition	2014
Finalist	Henry and Maria Holt Competition	2010
BM - Vocal Performance	San Francisco State University	2010
1st Place	Moorpark College Concerto Competition	2006

REFERENCES

Directors

Matthew Ozawa
Eugene Brancoveanu
Ragnar Conde
Pat Diamond
Nicolas Aliaga

Conductors

Nicole Paiement
Joshua Habermann
Jonathan Kuhner
José Luis Moscovich
Brent McMunn

Composers

Emma Logan
Stephen Eddins
Eric Choate
Nick Benavides
Emily Shisko